

## English

This term our key texts include: Paddington, How to Catch a Star and Smeds and the Smoods.



The focus for each text will vary as the Year 1 and 2 children begin to write with a purpose to either entertain or to inform e.g. writing a set of instructions on how to catch a star. For a comprehensive list of our key texts and an overview of the writing focus week by week [click here](#).

## Phonics



Children Year 1 and 2 will all undertake a 30 minute phonics or SPaG session daily. The children will learning four new sounds per week or new spelling rules, with the opportunity to re-visit and put their learning into practise throughout the week.

Y1- Children will consolidate learnt sounds from Phase 3, before moving onto Phase 5

Y2 -Children will be consolidating Phase 5 and 6 Phonics before moving onto spelling patterns through SPaG after half term

## Religious Education

Big Questions:

- What can we learn from sacred books?
- What makes some places sacred?



We will be discussing who Christians believe Jesus and his family are and how Jesus helped others. In the latter part of the half term, we will be looking into and retelling the Christmas story.



Our vision is simple. We want everyone to SHINE.  
*'Do not light a lamp and cover it with a bowl or put it under the bed. Instead they put it on a lampstand, so that people will see the light as they come in'. Luke 8 v16*

## Infants Curriculum Learning Overview – Spring - 2022

**Bright Lights, Big City!**



**To Infinity and Beyond**



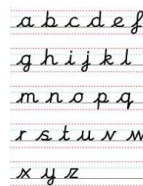
Enrichment Opportunities: Seasonal walks around our local area, Planetarium

## How can I help with my child's learning?

- Practising reading and writing common exception words
- Daily reading
- Sharing Story (to come after half term)
- Practising automatic recall for addition and subtraction facts first up to 10, then up to 20

## Handwriting

Handwriting is taught separately as children practise their letter formation. Year 1 and 2 children will begin to practise their pre-cursive handwriting.



## Mathematics

Year 1

- Numbers 0-10
- Additive structures
- Addition and subtraction facts within 10
- Numbers 0-20

Year 2

- Multiplication and division
- Shape
- Addition and subtraction of two digit numbers
- Money
- Fractions
- Time



## Mastering Number

We are fortunate enough to be participating in a scheme from the NCETM called 'Mastering Number'. The aim of this scheme is that over time, children will leave Key Stage 1 with fluency in calculations, a confidence and a flexibility with number.



The focus over the course of the year will be subitising, cardinality, ordinality, counting, composition, comparison and number facts.

## Guided Reading

The Year 2 children will undertake up to two sessions of Guided Reading a week. What are Vipers? VIPERS is an anagram to aid the recall of the 6 reading domains: **Vocabulary, Inference, Prediction, Explaining, Retrieval, Sequence/Summarise**

## PE

The children will enjoy 2 PE sessions within the week (Monday and Thursday). Please ensure your child comes to school wearing their PE kit on these days. Weather dependent the children will have their PE sessions both in and outdoors.

The PE sessions follow a scheme called REAL PE. This scheme real PE gives every child the physical literacy, emotional and thinking skills to achieve in PE, Sport and life. The unique, child centred approach transforms how we teach PE to include, challenge and support every child.

real PE

This term the children will be focusing on:  
**Coordination**- Sending and Receiving  
**Dynamic Balance to Agility**- Jumping and Landing

There will be a focus on 2 books over the next term – John and Jasmine Learn to Juggle, and Journey to the Blue Planet. The books are used to support and reinforce the learning and skills they are developing within their sessions. These skills will then be applied in a series of **Gymnastic** and **Dance** sessions.

## Music



The children enjoy their Music sessions once a week. The units children will be learning about this term are:

### **On this Island- British songs and sounds**

Children will be creating sounds to represent three contrasting landscapes: seaside, countryside and city.

### **Musical Me**

In this topic children learn to sing the song 'Once a Man Fell in a Well' and to play it using tuned percussion, adding sound effects, experimenting with timbre and dynamics and using letter notation to write a melody

## PSHE

This term, children will be asked the questions and given the opportunity to reflect upon:

- What helps us to stay healthy?
- What can we do with money?



In addition to the curriculum questions above, children will continue to explore our school rules and expectations, as well as settle back into school routines.

## History



### *Historical Significance*

#### The Great Fire of London

- What was the Great Fire of London?
- How did the Great Fire of London begin?
- Who was Samuel Pepys and why was he significant at the time?

### *Significant Historical People*

#### Neil Armstrong and the Great Space Race

- What was the Great Space Race and who was involved?
- Who was Neil Armstrong?



## Science



### **Seasonal Changes including the movement of Earth and Space**

- Continuous and regular exploration across the year.

The children will continue to observe changes across the four seasons. They will observe changes in the weather, describe weather associated with seasons and how the day length varies. The children will also continue to look at the months within a year.



## DT



### *Mechanisms*

This unit's theme is based on the children making a moving story book.

- To explore making mechanisms.
- To design a moving story book.
- To construct a moving picture.
- To evaluate their finished product.



### *Structures*

This unit's theme is based on the children creating a chair that would be suitable for Baby Bear.

- To explore the concept and features of structures and the stability of different shapes.
- Explain how their ideas would be suitable for Baby Bear.
- Produce a model that supports a teddy, using the appropriate materials and construction techniques.
- Explain how they made their model strong, stiff and stable.



## Geography

In this unit of work, the children will be **investigating places**. They will locate and identify countries and capital cities of the UK. These include: England, Scotland, Wales, Northern Ireland, London, Edinburgh, Cardiff, and Belfast.

They will also be investigating the key human and physical features of London. These include:

- Houses of Parliament
- Big Ben
- Buckingham Palace
- London Bridge
- River Thames

